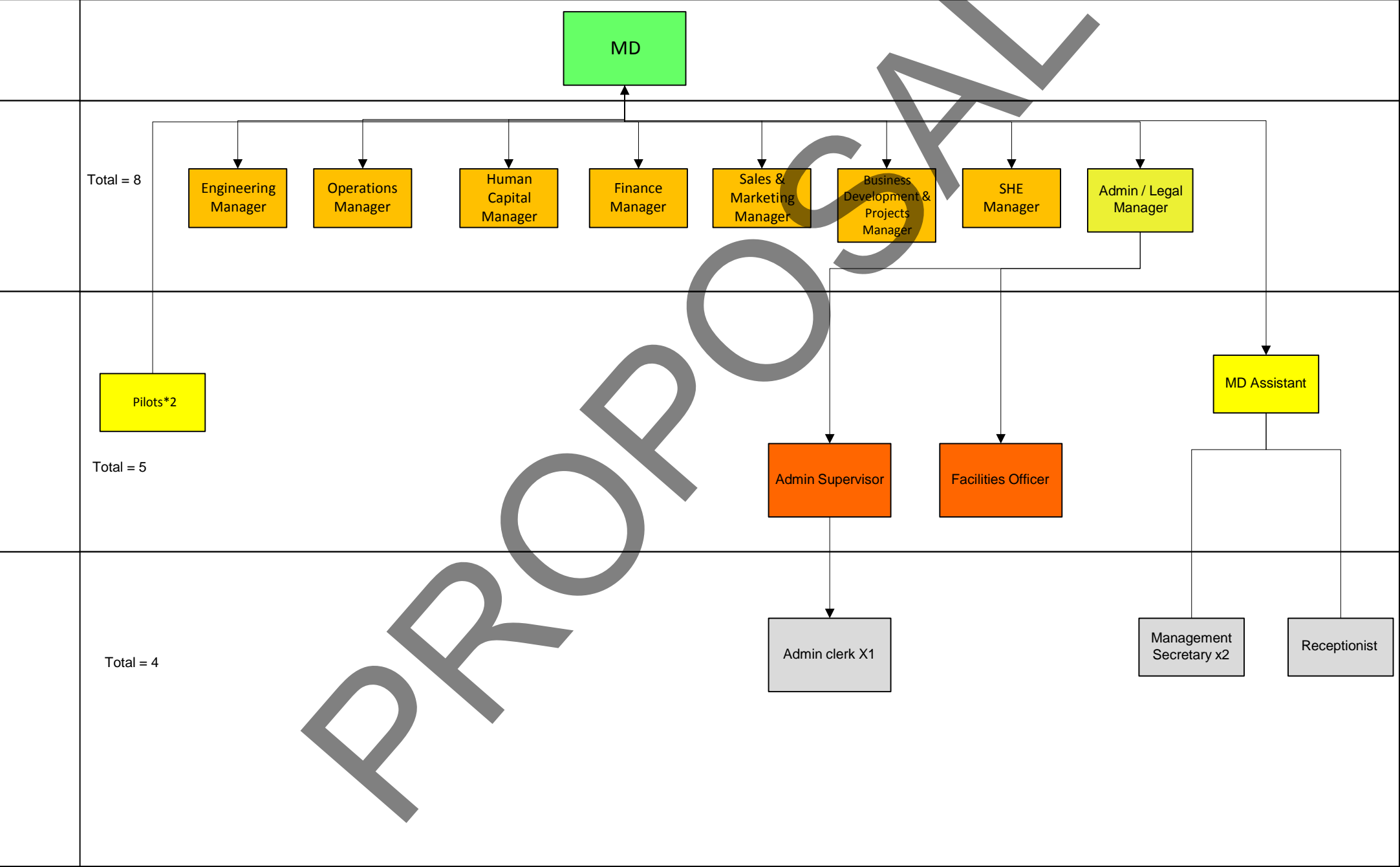


MD Structure

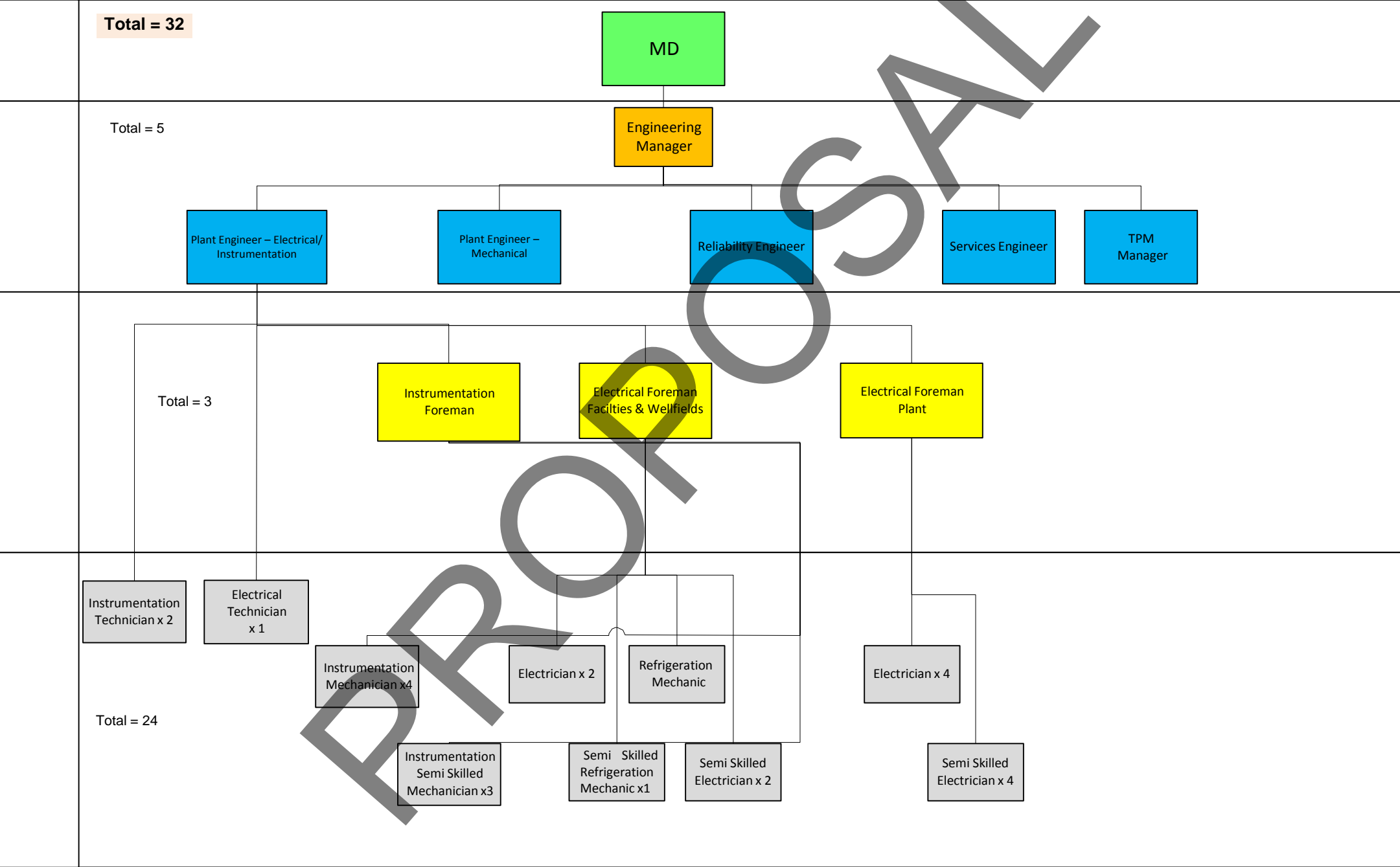
Total = 17



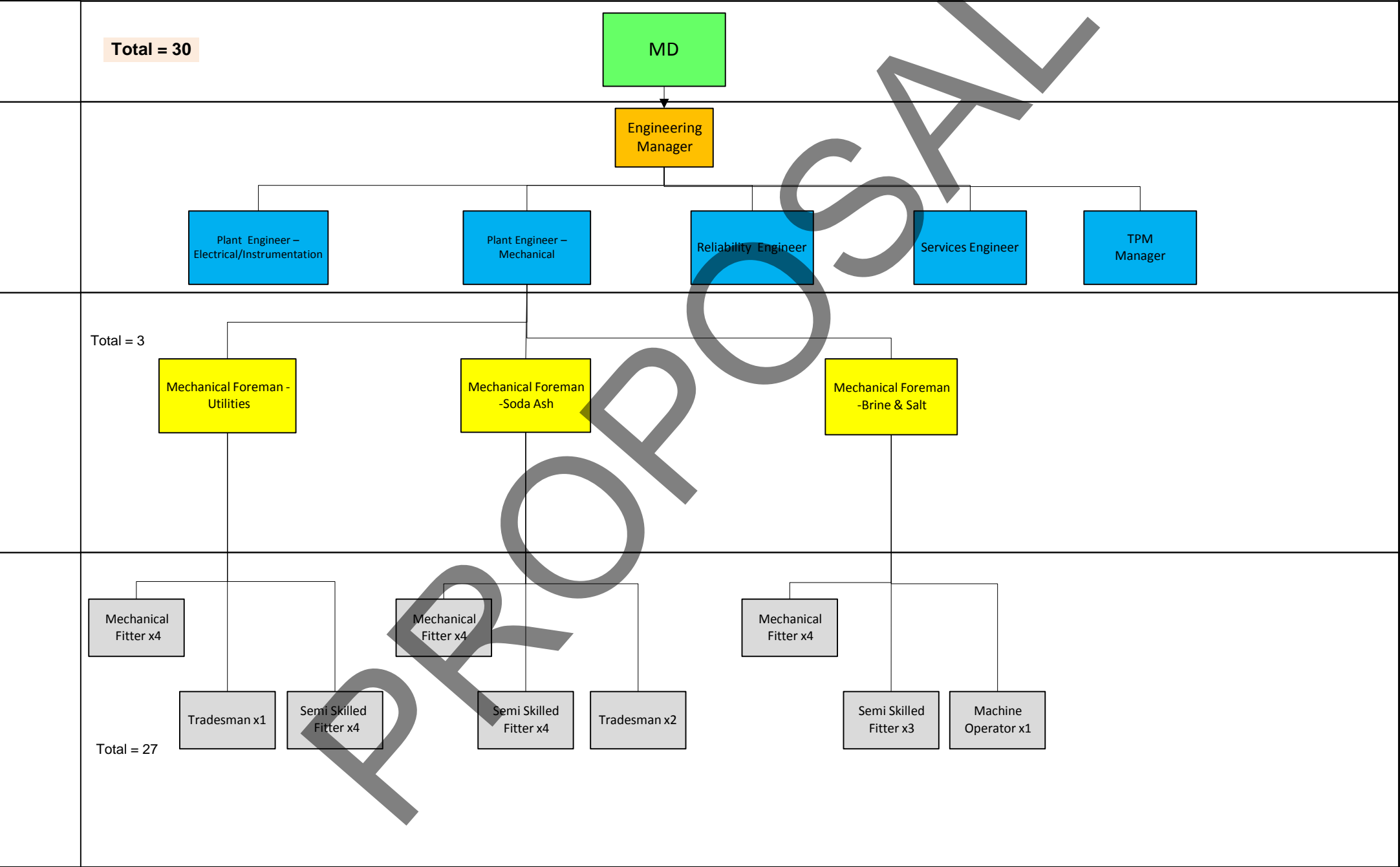


Engineering Structure

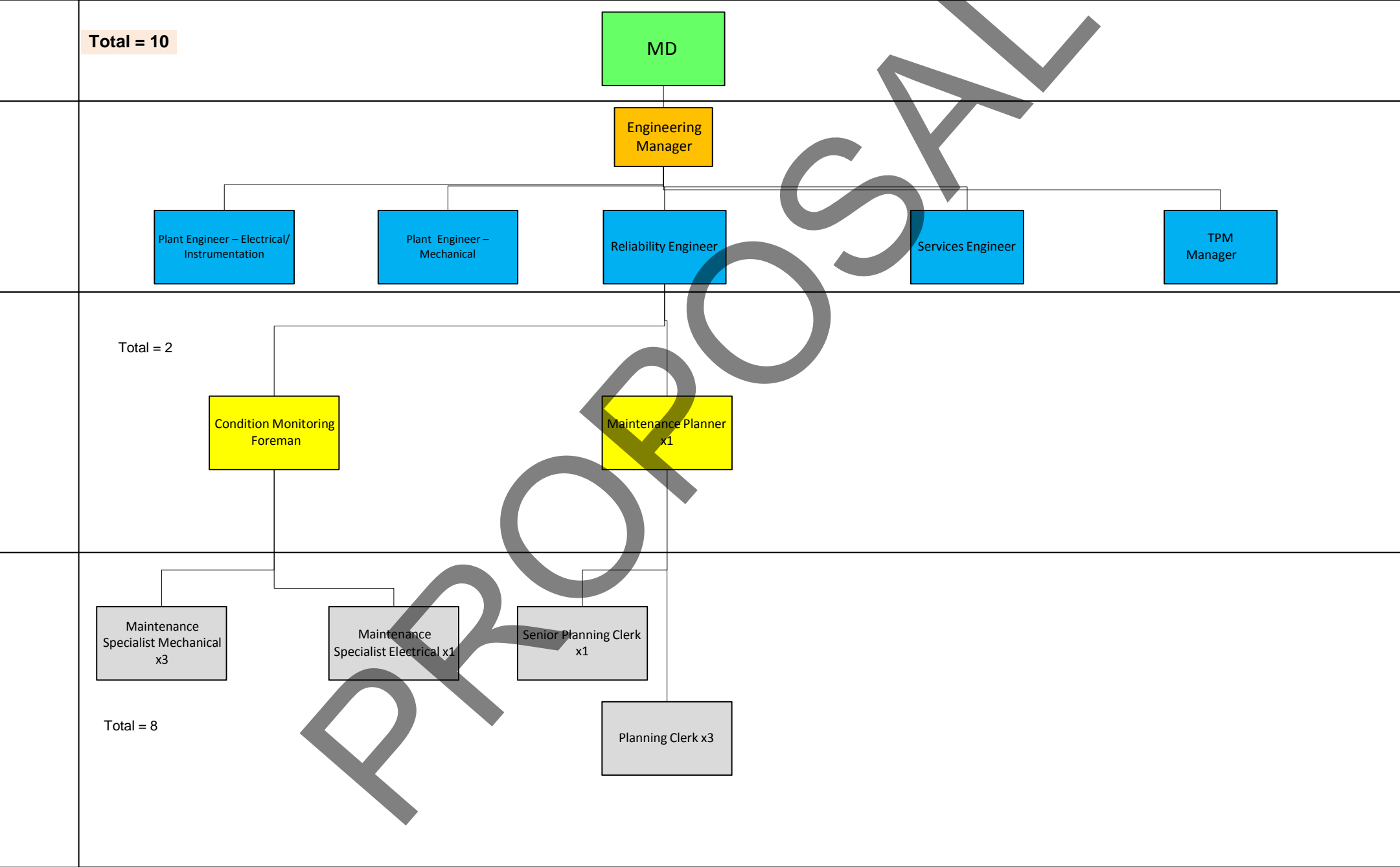
Engineering

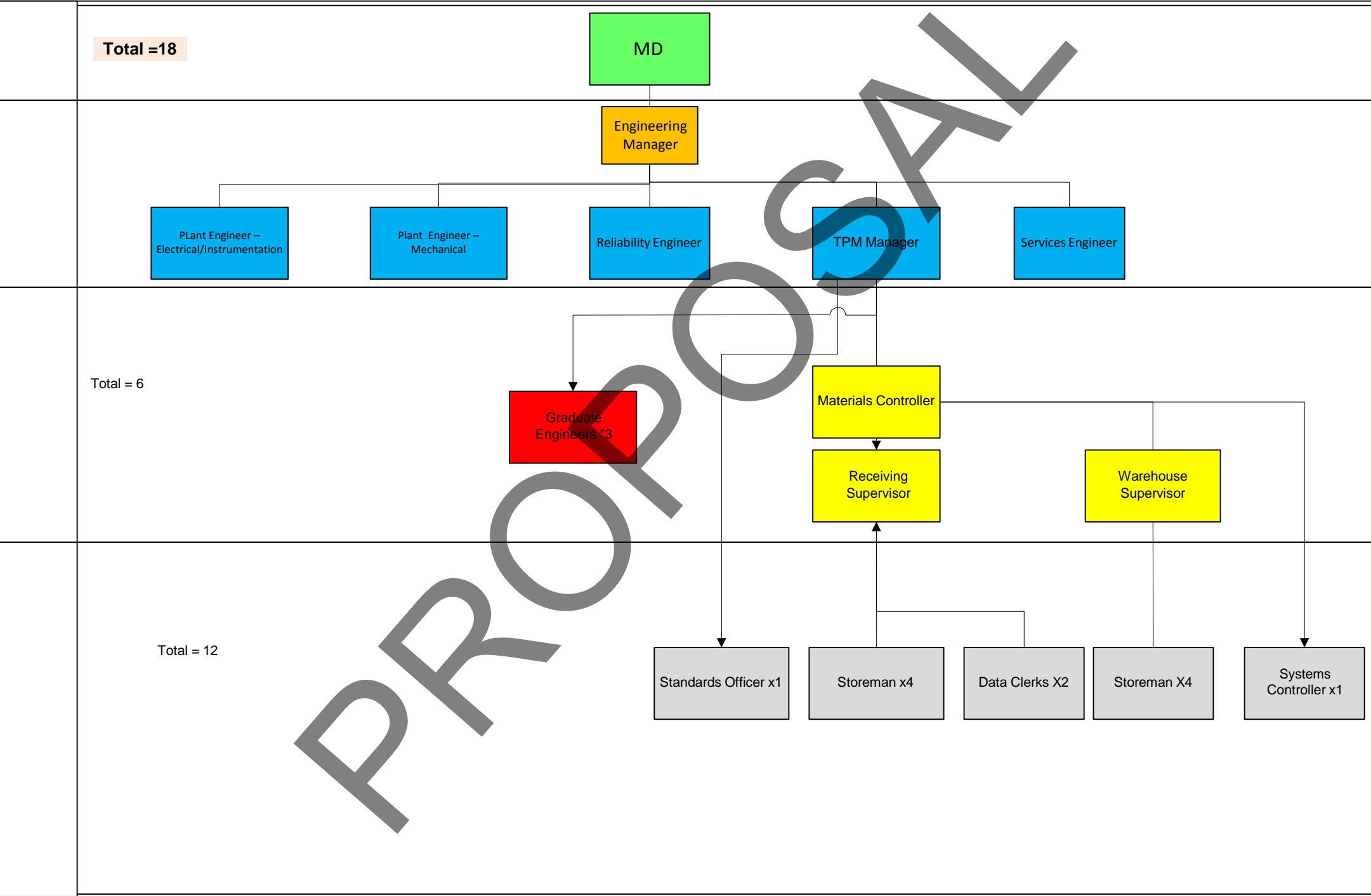


Engineering

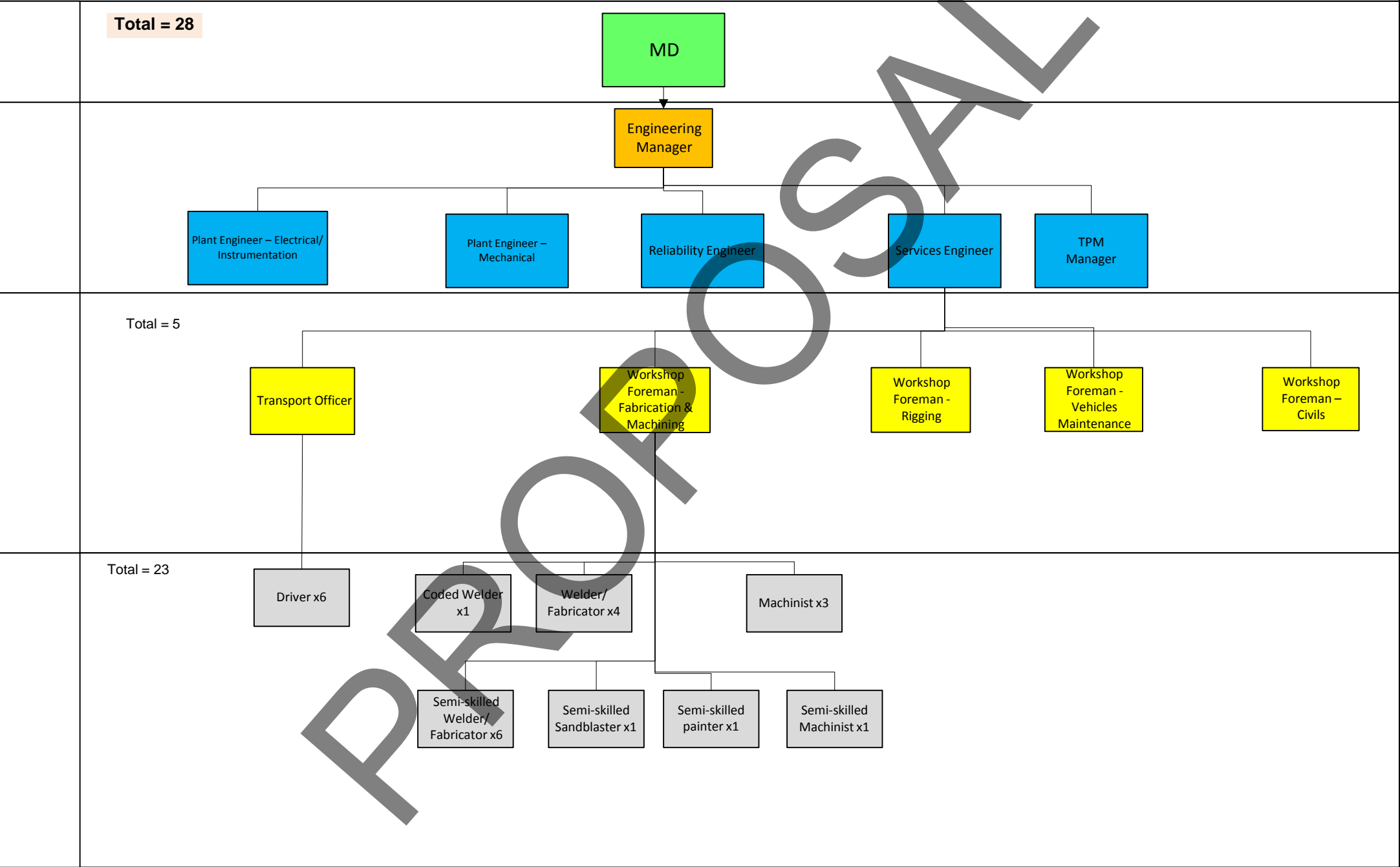


Engineering



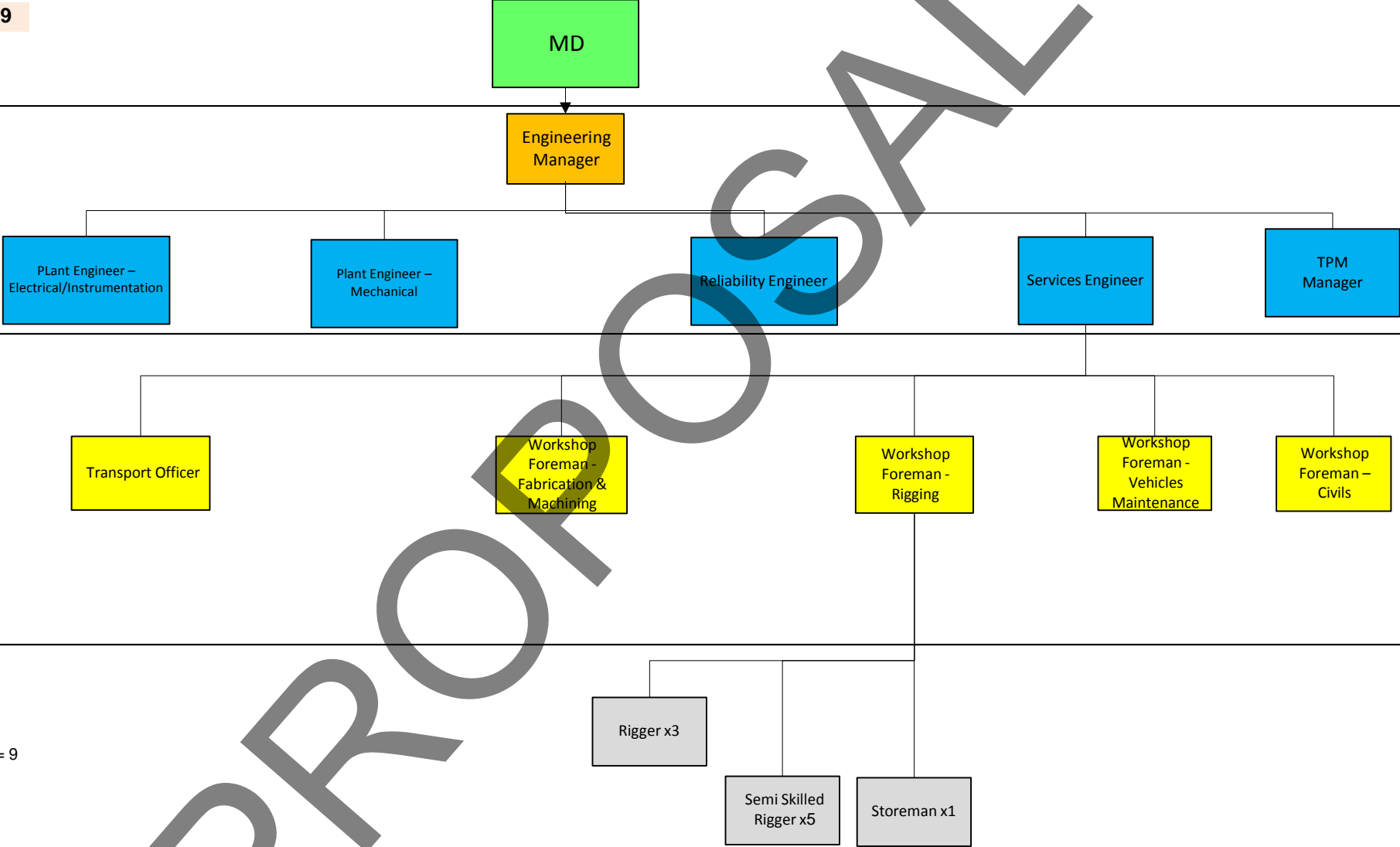


Engineering



Engineering

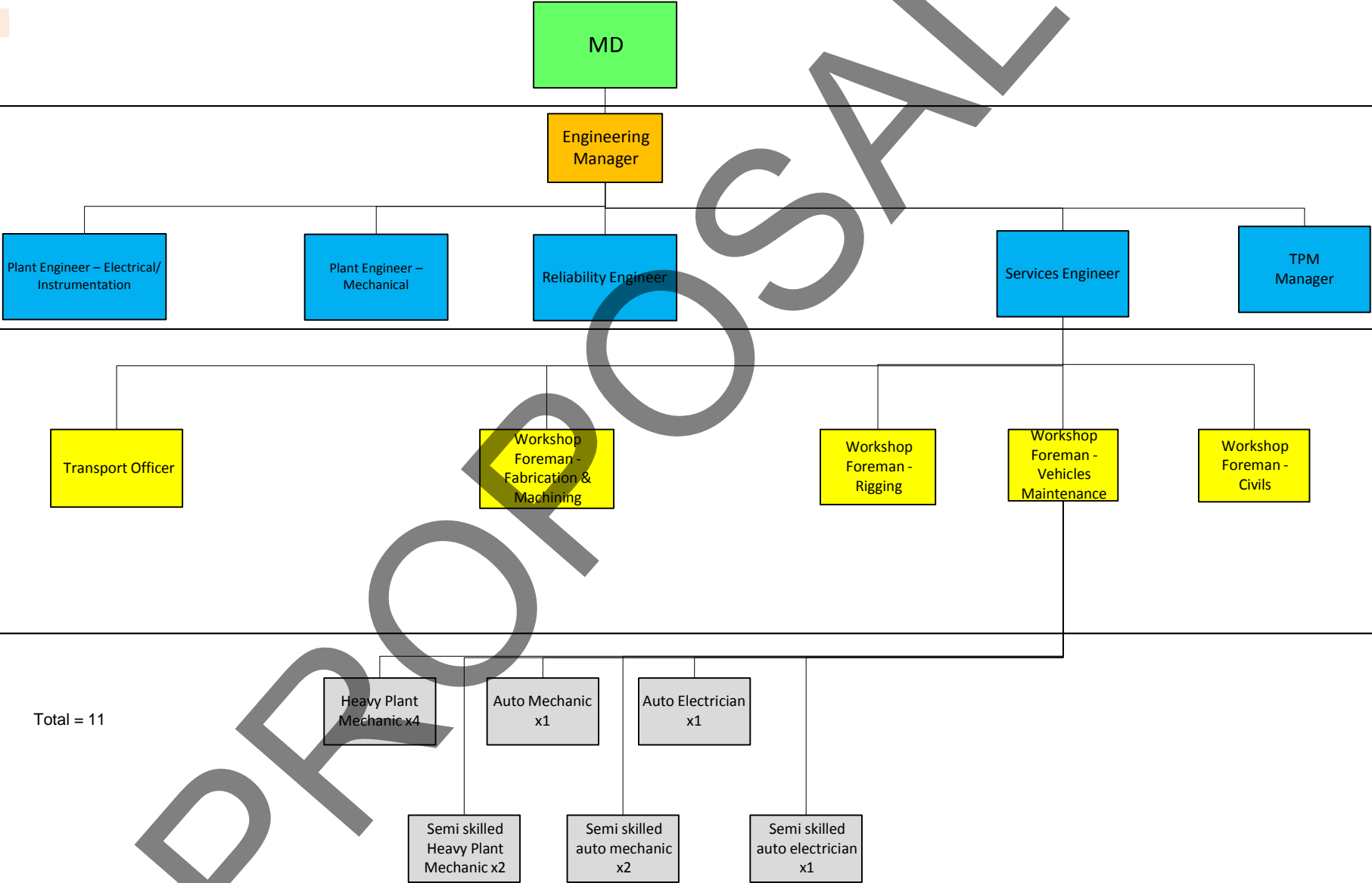
Total =9



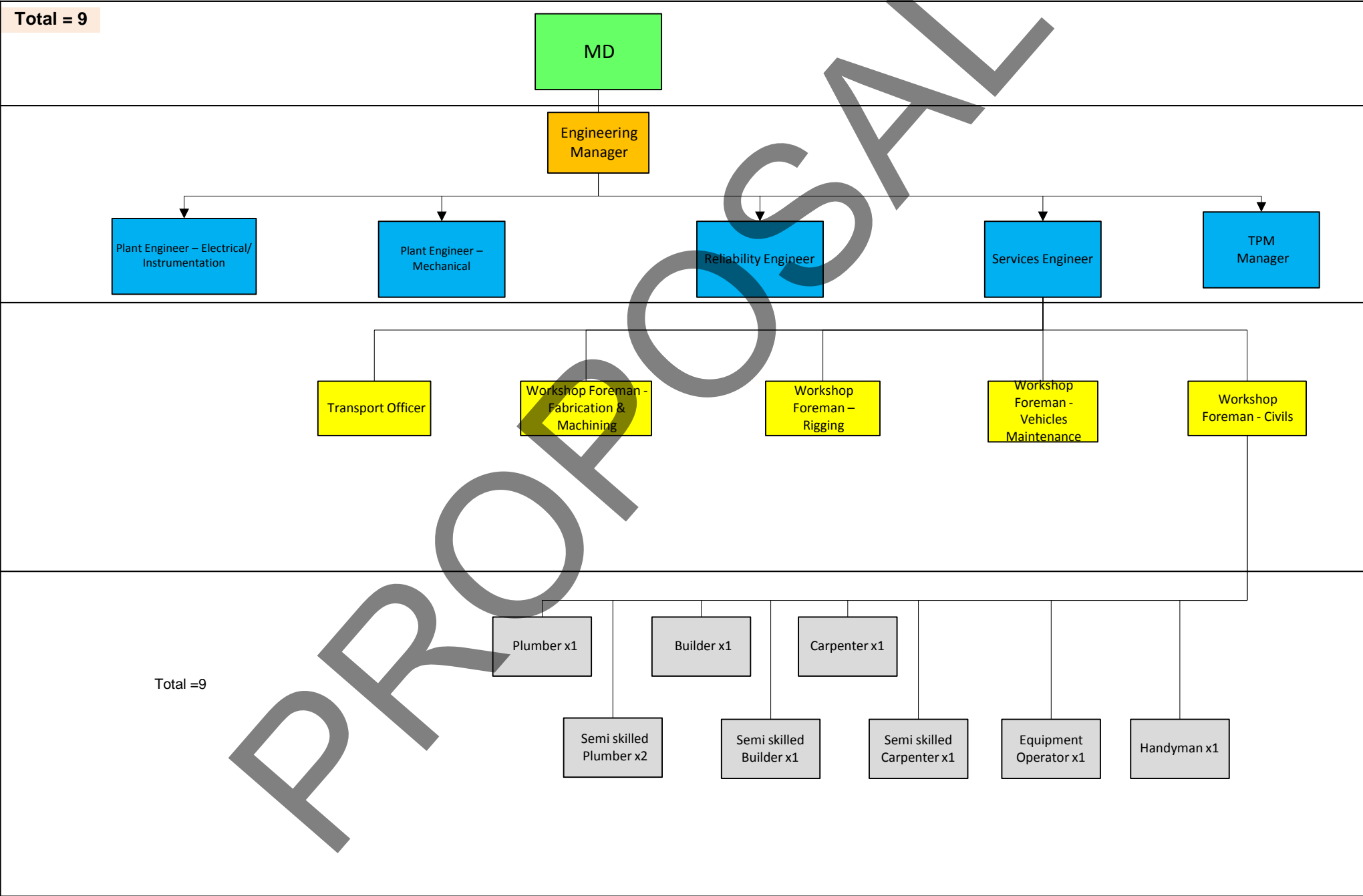
Total = 9

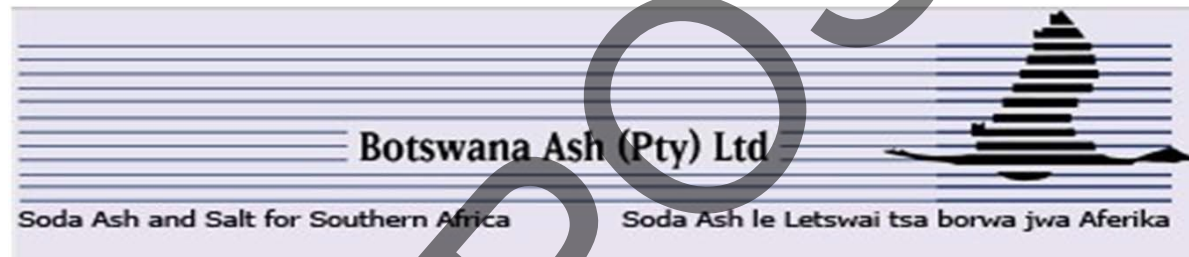
Engineering

Total =11



Engineering





Business Development & Projects Structure

Business Development & Projects

Total =10

MD

Total = 5

Business Development & PMO Manager

Process Engineering x3

Project Engineer - Mechanical

Project Engineer - Electrical

Total = 2

Clerk of Works*2

Total = 3

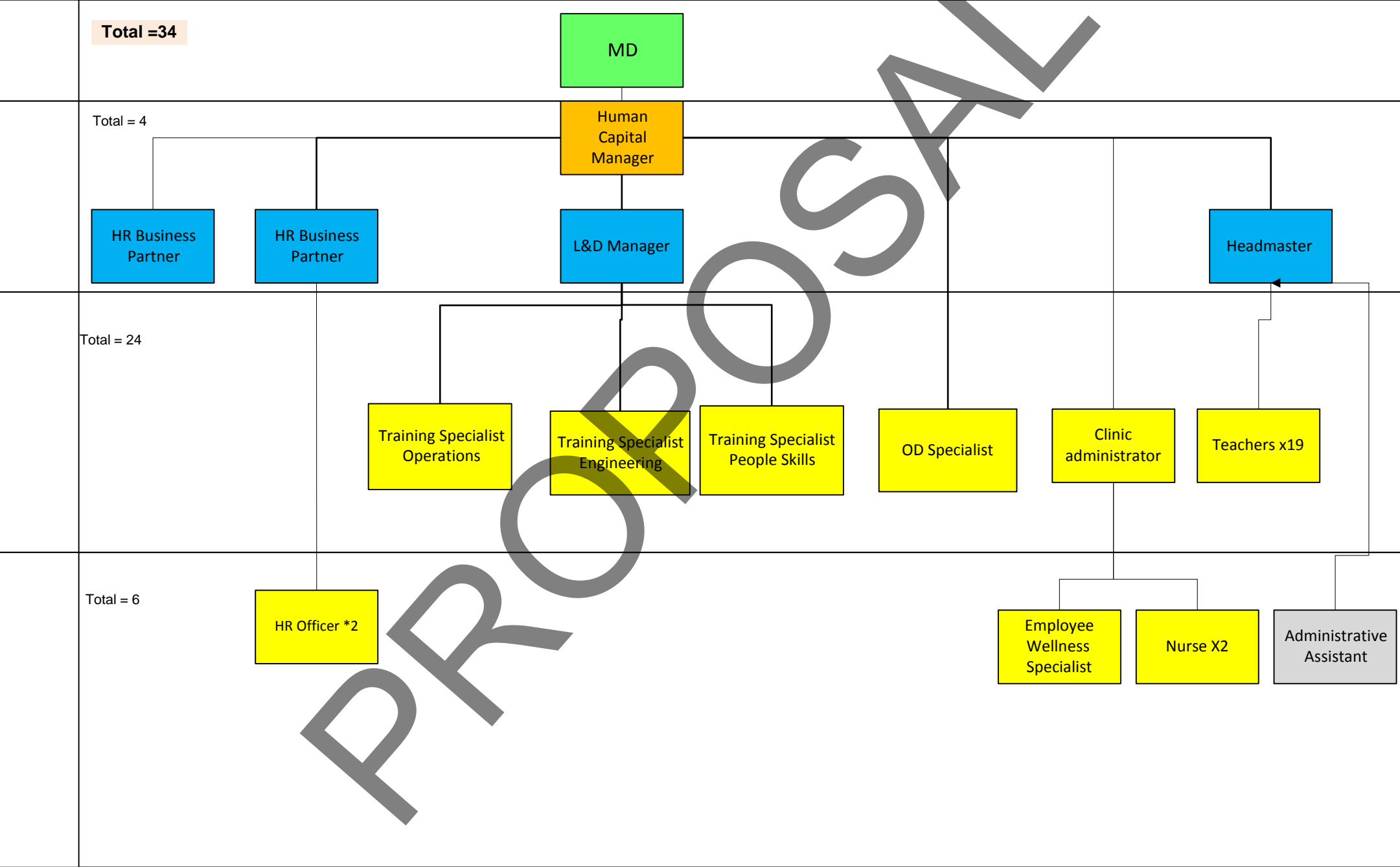
Project Administrator

Draughtsman x2



Human Resources

Human Resources





Marketing & Sales

Total =16

MD

Marketing & Sales
Manager

Distribution
Manager

Sales Manager -
Africa

Total = 2

Railway
Supervisor

Public Relations &
Communications
Officer

Sales and
Customer Service
Representative
Supervisor

Total = 3

Shunter
X4

Locomotive Driver
x4

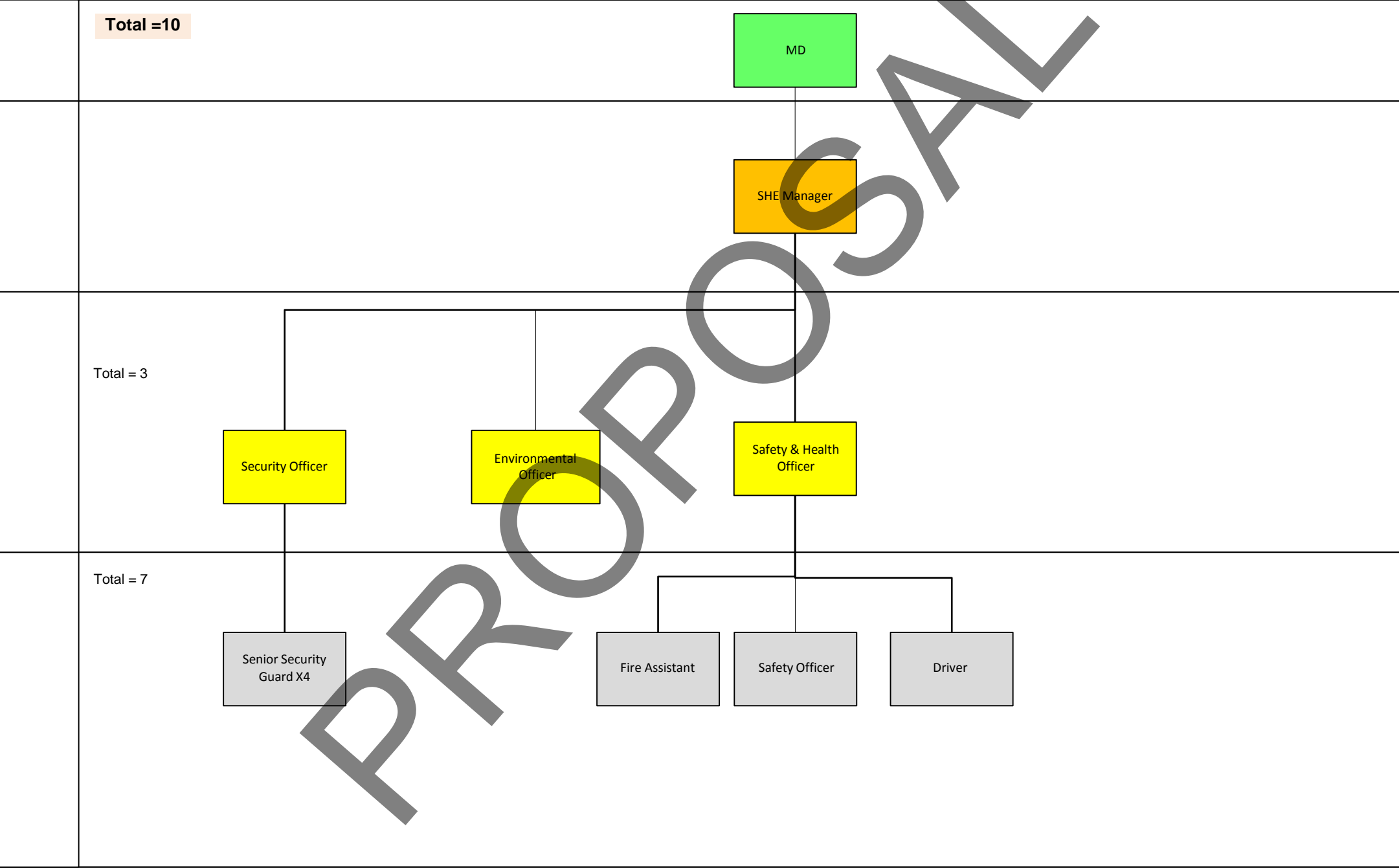
Sales
Administrator

Sales and
Customer
Services
Representative x2

Total = 11



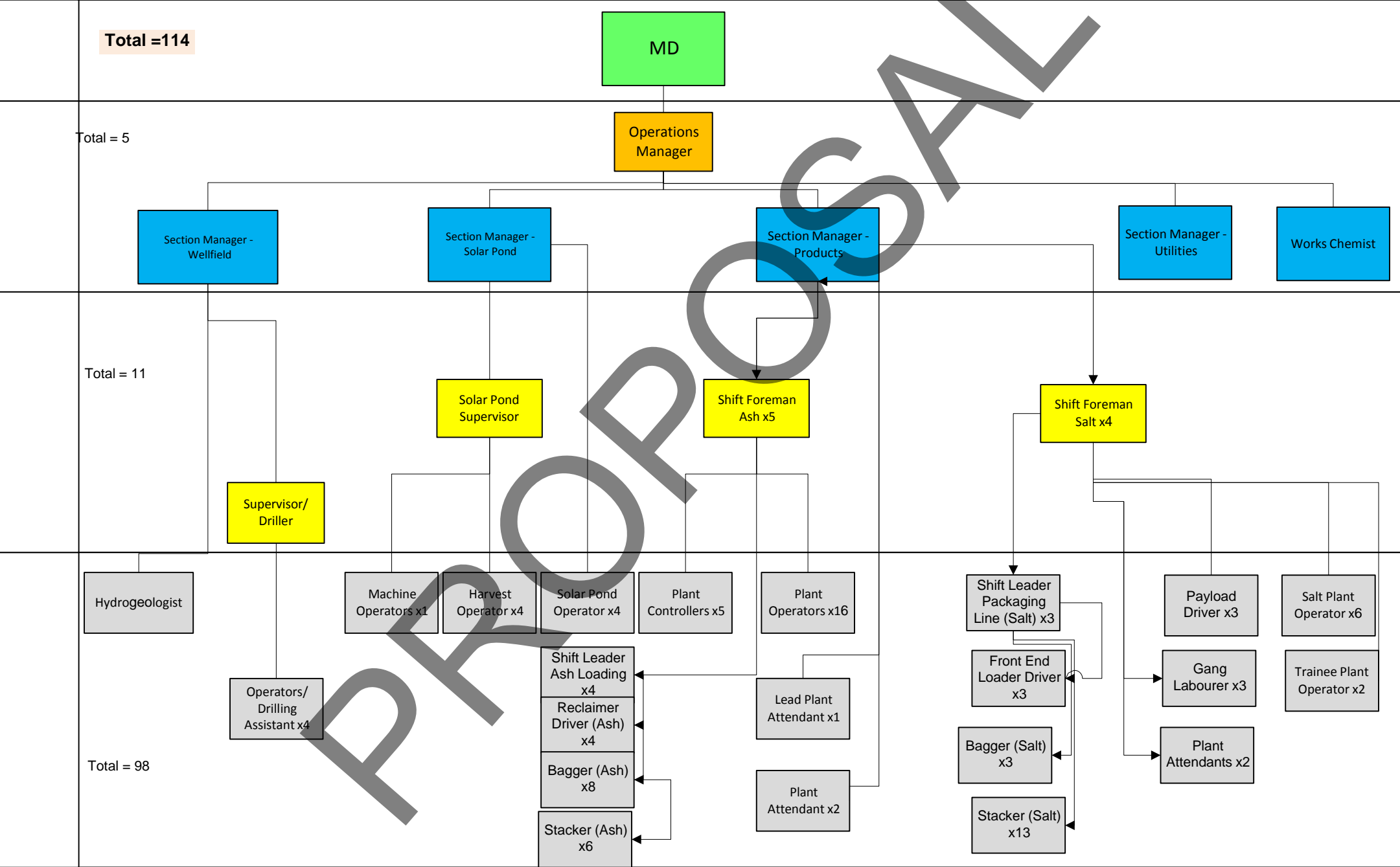
SHE





Operations

Operations



Operations

Total =49

MD

Operations
Manager

Section Manager -
Wellfield

Section Manager -
Solar Pond

Section Manager -
Products

Section Manager -
Utilities

Works Chemist

Total = 11

Shift Foreman x5

Laboratory
Technician

Shift Leader x4

Process Engineer
Production x1

Total = 38

Plant
Controller x5

Plant Operator
x14

Driver Coal x4

1x Trainee
Plant
Operator

Lab Analyst x8

Lab Day
Analyst x1

Samplers x2

Microbiologist
x1

Trainee
Process
Engineer x1

Data Processor
x1



Finance

Total =25

MD

Finance Manager

Total = 4

Management Accountant

Company Accountant

ICT Manager

Procurement Manager

Cost Accountant x2

Systems Accountant

Financial Accountant

Accounts Administrator (Cost& Sales)

Payroll Administrator

Systems Admin X3

Total = 21

Debtors Clerk

Creditors Supervisor

Cashier

Payroll Clerk

Creditors Clerk X4

Buyers X3

Expeditor

DEPARTMENT	NUMBER
MANAGEMENT	17
ENGINEERING	147
OPERATIONS	163
HUMAN RESOURCE	34
SALES & MARKETING	16
BUSINESS DEVELOPMENT & PROJECTS	10
SHE	10
FINANCE	25
TOTAL	422

PROPOSAL