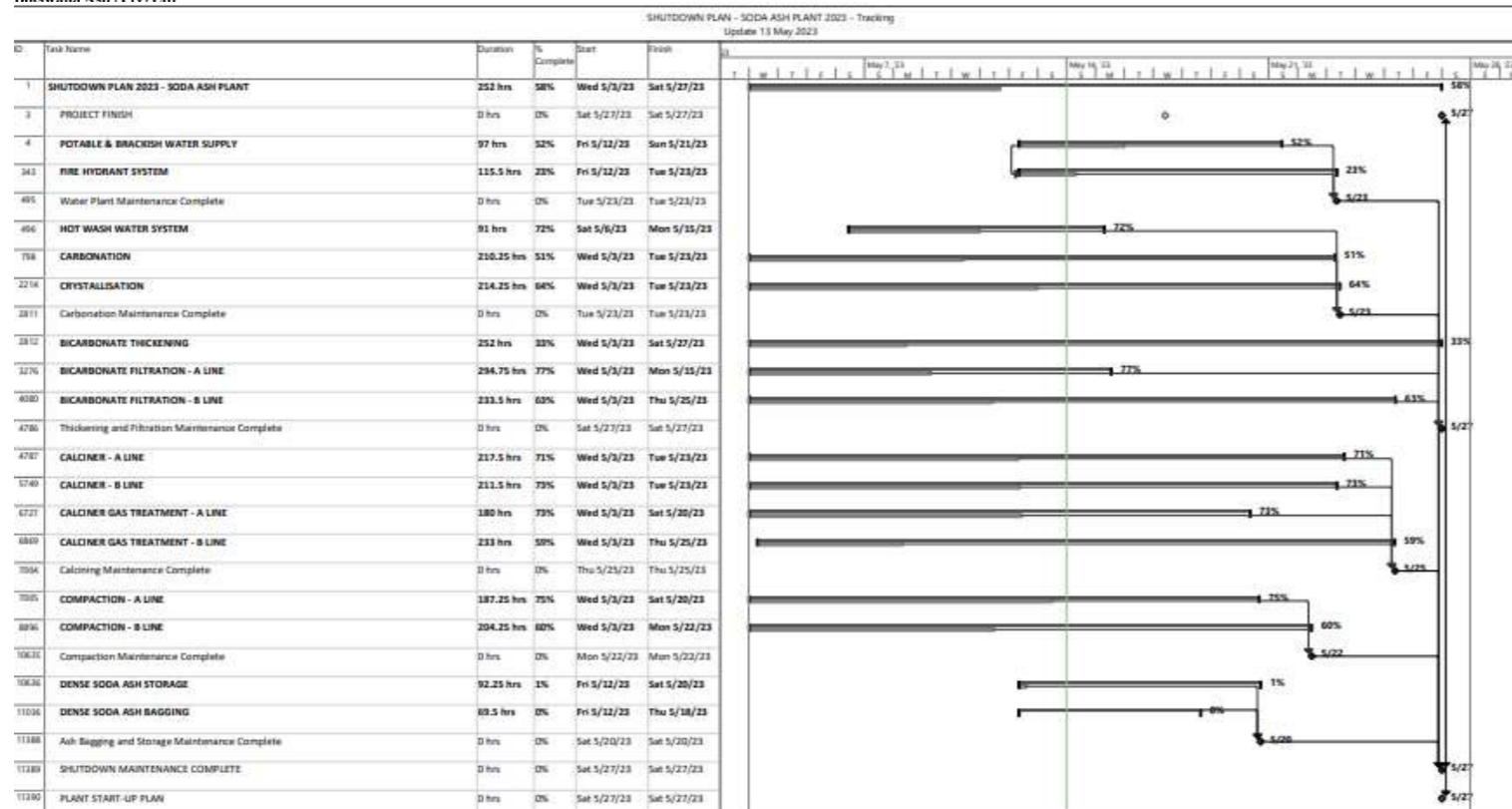


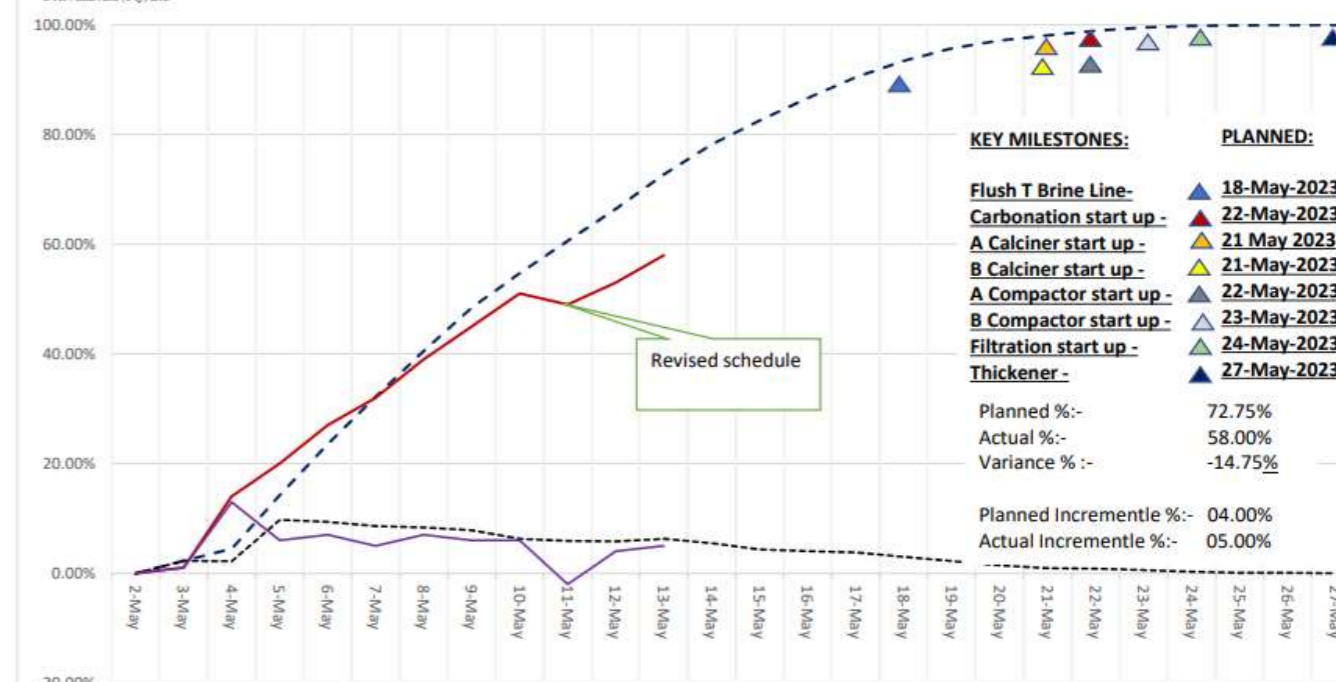


SODA ASH PLANT DASHBOARD

Drafted by: Slingshot Consultancy
STATUS DATE: 13-May-23



BOTSWANA - BOTASH REFURBISHMENT PROJECT 2023 - SODA ASH PLANT - Update:- 13 May 2023 - Rev 01



| SODA ASH PLANT KEY MILESTONES | PLANNED | FORECAST | Variance | DAYS TO COMPLETION | TOP 5 RISKS |
|-------------------------------|-----------|-----------|----------|--------------------|---|
| A Calciner | 21-May-23 | 20-May-23 | 1 | 12 | 1) Thickner - Critical Path 2) Compactor 3) Concrete repairs 4) Carbonation 5) Works execution risks after inspections. |
| B Calciner | 21-May-23 | 20-May-23 | 1 | | |
| Hot Wash Water system | 17-May-23 | 19-May-23 | -2 | | |
| Compaction A | 21-May-23 | 23-May-23 | -2 | | |
| Compaction B | 22-May-23 | 23-May-23 | -1 | | |
| Thickner scope completion | 27-May-23 | 29-May-23 | -2 | | |
| Soda Ash Plant operational | 25-May-23 | 27-May-23 | -2 | | |

| PLANT SUB-AREA: | Planned | Actual | Variance | Planned % Increment | Actual % Increment | Risk |
|---------------------------------|---------|--------|----------|---------------------|--------------------|------|
| SHUTDOWN 2023 - SODA ASH PLANT | 72.75% | 58.00% | -14.75% | 6.29% | 5.00% | |
| POTABLE & BRACKISH WATER | 30.18% | 52.00% | 21.82% | 16.60% | 0.00% | |
| FIRE HYDRANT SYSTEM | 41.23% | 23.00% | -18.23% | 17.05% | 4.00% | |
| HOT WASH WATER SYSTEM | 97.13% | 72.00% | -25.13% | 2.23% | 0.00% | |
| CARBONATION | 72.63% | 51.00% | -21.63% | 7.15% | 4.00% | |
| CRYSTALLISATION | 66.37% | 64.00% | -2.37% | 7.34% | 2.00% | |
| BICARBONATE THICKENING | 55.59% | 33.00% | -22.59% | 5.39% | 0.00% | |
| BICARBONATE FILTRATION - A LINE | 97.42% | 77.00% | -20.42% | 2.37% | 1.00% | |
| BICARBONATE FILTRATION - B LINE | 70.21% | 63.00% | -7.21% | 3.34% | 0.00% | |
| CALCINER - A LINE | 80.98% | 71.00% | -9.98% | 3.46% | 12.00% | |
| CALCINER - B LINE | 78.63% | 63.00% | -15.63% | 5.27% | 3.00% | |
| CALCINER GAS TREATMENT - A LINE | 84.30% | 73.00% | -11.30% | 7.24% | 1.00% | |
| CALCINER GAS TREATMENT - B LINE | 87.41% | 59.00% | -28.41% | 4.28% | 4.00% | |
| COMPACTION - A LINE | 80.23% | 75.00% | -5.23% | 5.82% | 2.00% | |
| COMPACTION - B LINE | 78.50% | 60.00% | -18.50% | 5.03% | 5.00% | |
| DENSE SODA ASH STORAGE | 18.18% | 1.00% | -17.18% | 17.19% | 1.00% | |
| DENSE SODA ASH BAGGING | 28.30% | 0.00% | -28.30% | 21.19% | 0.00% | |

| LOOK AHEAD SCOPE OF WORKS (L/L) | POSSIBLE RISKS | MITIGATIONS ON RISKS |
|---|----------------------------------|----------------------|
| HWW Circulation lines - replace | | |
| Thickner S.O.W | Revised S.O.W after Inspections | Double shift |
| Hot Wash Pumps | | |
| HWW Instrumentation works | | |
| Carbonation Feed heaters - cleaning | | |
| A,B,C & D Sand Filters | | |
| Carbonation Feed tank | | |
| A Bicarbonate Belt Conveyor - Replace | Belt delivery | Low risk |
| Cloth Wash tank - relocate manhole | | |
| Cloth Wash Pumps - Inspect | | |
| Filtration pumps - overhaul | Workshop machining | Prioritise work load |
| Seal Water Heat Exchanger - Repair | Repairs in S.A.- turnaround time | ETA tba. |
| Vacuum Pumps - Inspection | | |
| Electrical maint - Pumps | Motor repairs - outside Vendors | Prioritise work load |
| Bicarb Filtration air receivers - Clean | | |
| Belt Filters - Struct, change to S/Steel | | |
| B Belt Filters - check bearings / ripple skirting | | |
| Replace slide gates | | |
| Bitterns pumps | | |
| Filter Feed pumps | Workshop machining | Prioritise work load |
| E & I Works | | |
| Repair Fibre glass pipelines | | |