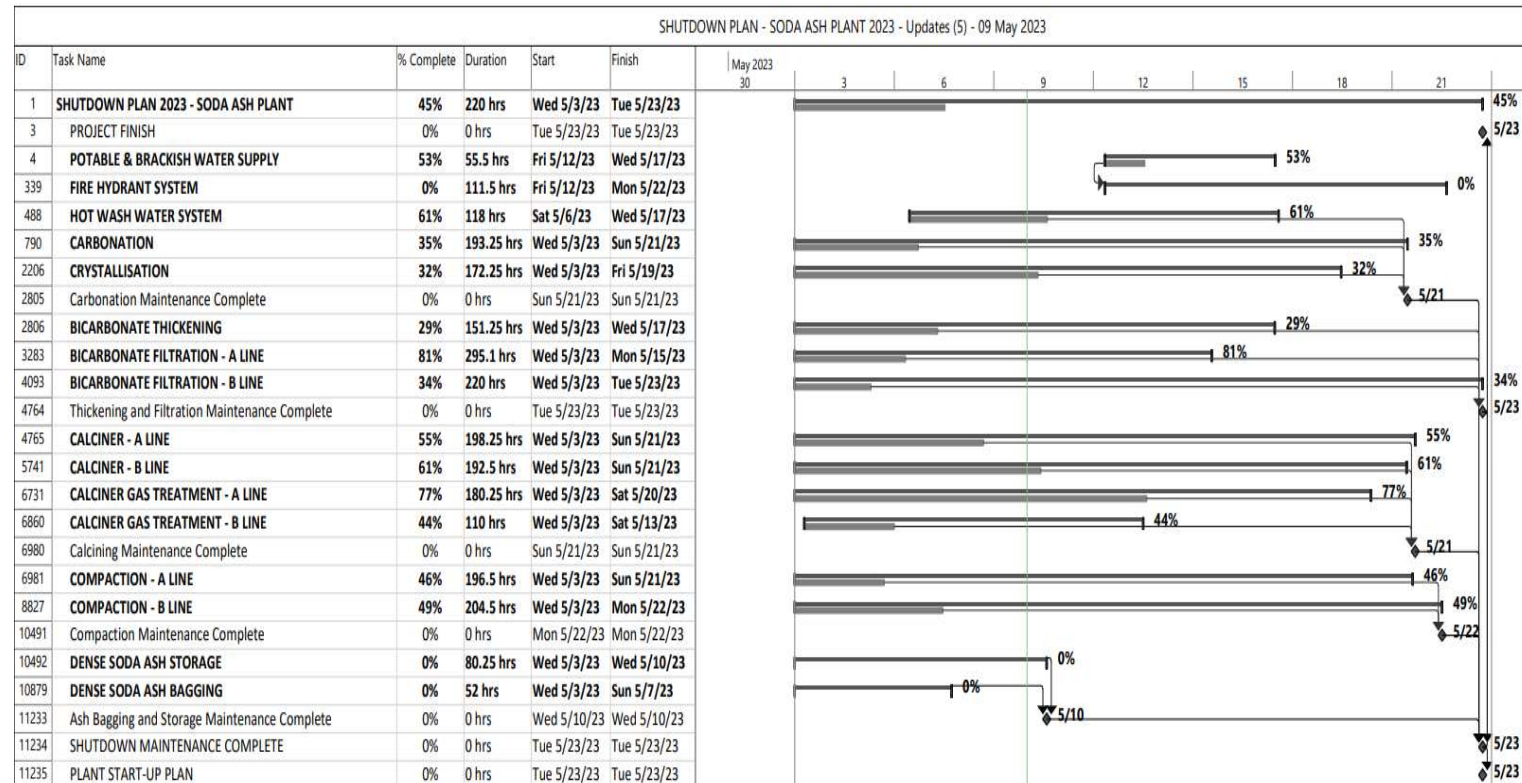




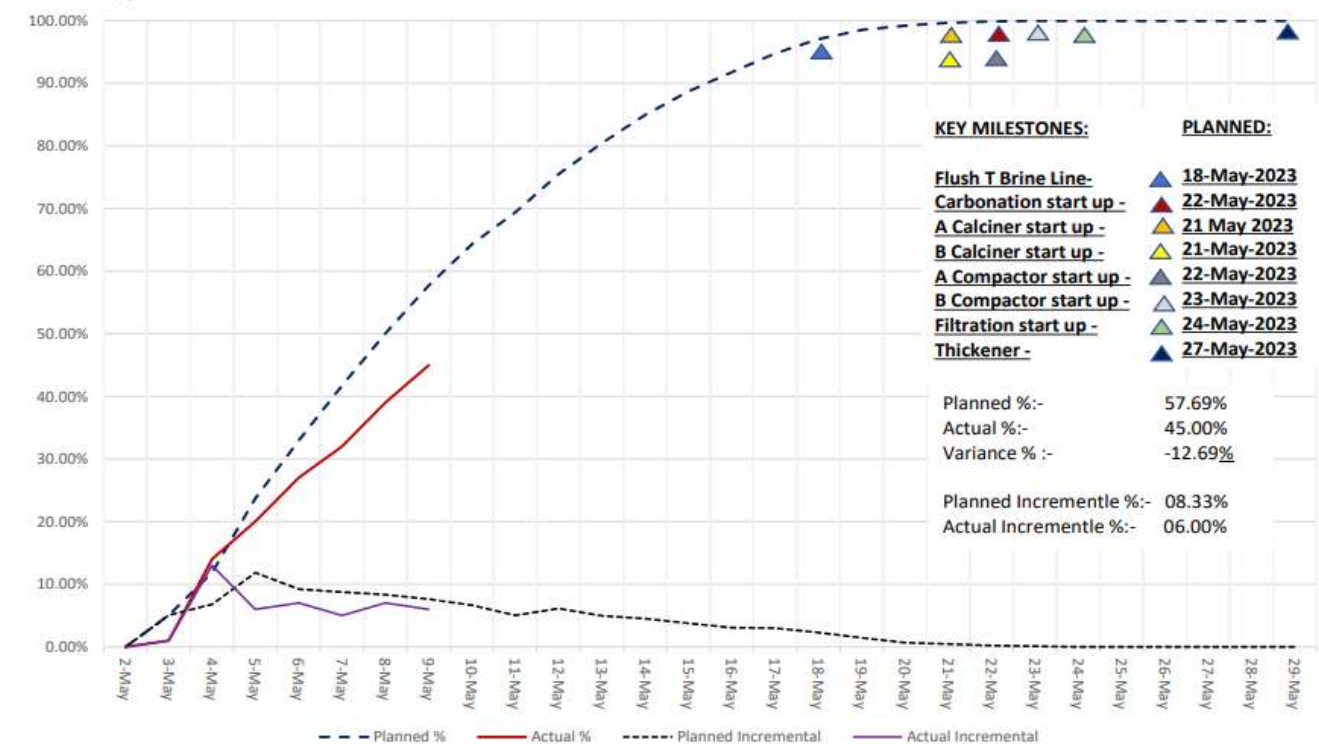
SODA ASH PLANT DASHBOARD

Drafted by: Slingshot Consultancy
STATUS DATE: 8-May-23



BOTSWANA - BOTASH REFURBISHMENT PROJECT 2023 - SODA ASH PLANT

- Update:- 09 May 2023



| SODA ASH PLANT KEY MILESTONES | PLANNED | FORECAST | Variance | DAYS TO COMPLETION | TOP 5 RISKS |
|-------------------------------|-----------|-----------|----------|--------------------|--|
| A Calciner | 21-May-23 | 20-May-23 | 1 | 16 | 1) Thickner - Critical Path 2) Compactor 3) Scaffold shortage 4) Carbonation 5) Works execution risks after inspections. |
| B Calciner | 21-May-23 | 20-May-23 | 1 | | |
| Hot Wash Water system | 17-May-23 | 19-May-23 | -2 | | |
| Compaction A | 21-May-23 | 23-May-23 | -2 | | |
| Compaction B | 22-May-23 | 23-May-23 | -1 | | |
| Thickner scope completion | 27-May-23 | 29-May-23 | -2 | | |
| Soda Ash Plant operational | 25-May-23 | 27-May-23 | -2 | | |

| PLANT SUB-AREA: | Planned | Actual | Variance | Planned % Increment | Actual % Increment | Risk |
|---------------------------------|---------|--------|----------|---------------------|--------------------|------|
| SHUTDOWN 2023 - SODA ASH PLANT | 57.69% | 45.00% | -12.69% | 8.76% | 6.00% | |
| POTABLE & BRACKISH WATER | 0.00% | 53.00% | 53.00% | 0.00% | 19.00% | |
| FIRE HYDRANT SYSTEM | 0.00% | 0.00% | 0.00% | 0.00% | 0.00% | |
| HOT WASH WATER SYSTEM | 59.55% | 61.00% | 1.45% | 21.20% | 37.00% | |
| CARBONATION | 54.93% | 35.00% | -19.93% | 7.33% | 3.00% | |
| CRYSTALLISATION | 37.97% | 32.00% | -5.97% | 14.13% | 4.00% | |
| BICARBONATE THICKENING | 68.72% | 29.00% | -39.72% | 12.66% | 4.00% | |
| BICARBONATE FILTRATION - A LINE | 88.40% | 81.00% | -7.40% | 7.66% | 2.00% | |
| BICARBONATE FILTRATION - B LINE | 62.07% | 34.00% | -28.07% | 3.85% | 9.00% | |
| CALCINER - A LINE | 51.40% | 55.00% | 3.60% | 7.71% | 5.00% | |
| CALCINER - B LINE | 50.56% | 61.00% | 10.44% | 6.93% | 7.00% | |
| CALCINER GAS TREATMENT - A LINE | 61.55% | 77.00% | 15.45% | 3.92% | 5.00% | |
| CALCINER GAS TREATMENT - B LINE | 65.76% | 44.00% | -21.76% | 3.91% | 22.00% | |
| COMPACTION - A LINE | 61.20% | 46.00% | -15.20% | 4.86% | 6.00% | |
| COMPACTION - B LINE | 54.48% | 49.00% | -5.48% | 8.00% | 7.00% | |
| DENSE SODA ASH STORAGE | 0.00% | 0.00% | 0.00% | 0.00% | 0.00% | |
| DENSE SODA ASH BAGGING | 0.00% | 0.00% | 0.00% | 0.00% | 0.00% | |

| LOOK AHEAD SCOPE OF WORKS (L/L) | POSSIBLE RISKS | MITIGATIONS ON RISKS |
|---|----------------------------------|----------------------|
| Hot Wash Water cleaning | | |
| HWW Circulation lines - replace | | |
| Thickner S.O.W | Revised S.O.W after Inspections | Recovery Schedule |
| Hot Wash Pumps | | |
| HWW Instrumentation works | | |
| Carbonation Feed heaters - cleaning | | |
| A,B,C & D Sand Filters | | |
| Carbonation Feed tank | | |
| A Bicarbonate Belt Conveyor - Replace | Belt delivery | Low risk |
| Cloth Wash tank - relocate manhole | | |
| Cloth Wash Pumps - Inspect | | |
| Filtration pumps - overhaul | Workshop machining | Prioritise work load |
| Seal Water Heat Exchanger - Repair | Repairs in S.A.- turnaround time | ETD tba. |
| Vacuum Pumps - Inspection | | |
| Electrical maint - Pumps | Motor repairs - outside Vendors | Prioritise work load |
| Bicarb Filtration air receivers - Clean | | |
| Belt Filters - Struct, change to S/Steel | | |
| B Belt Filters - check bearings / ripple skirting | | |
| Replace slide gates | | |
| Bitterns pumps | | |
| Filter Feed pumps | Workshop machining | Prioritise work load |
| E & I Works | | |
| Repair Fibre glass pipelines | | |