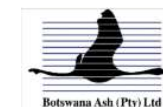


## UTILITY PLANT DASHBOARD

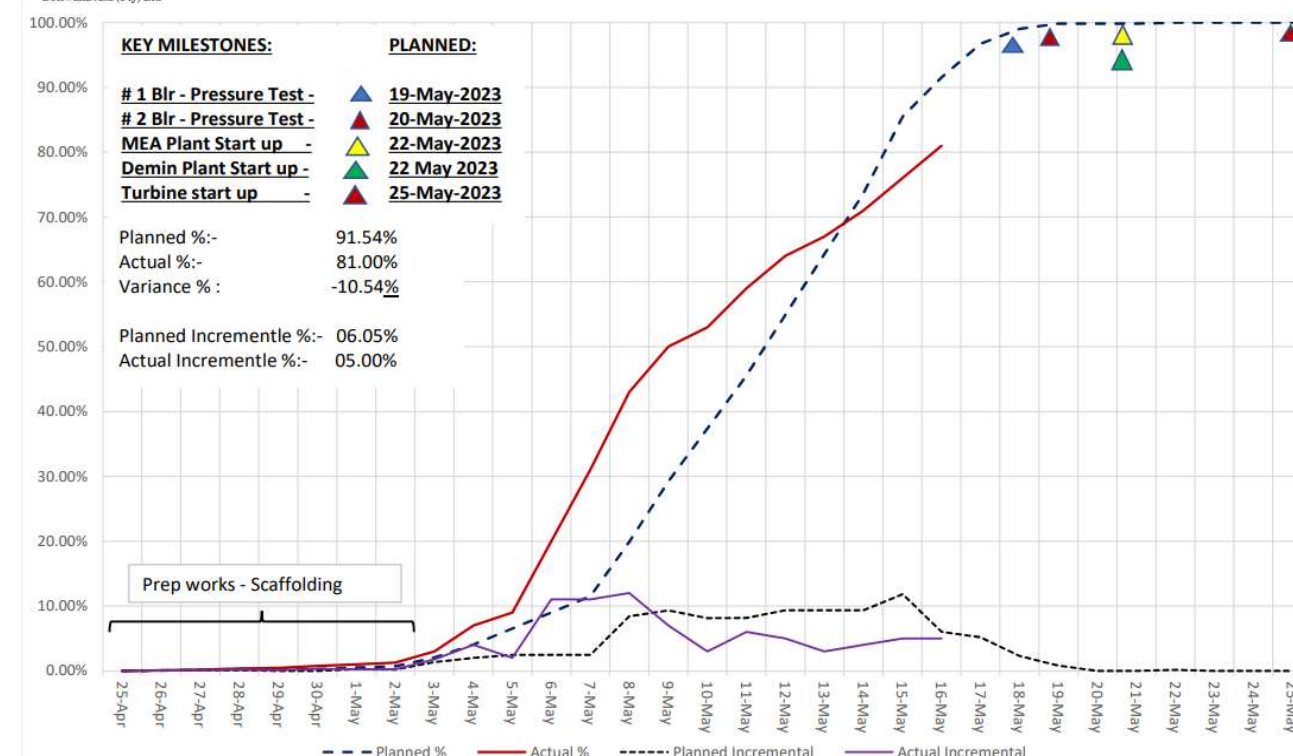
Drafted by: Slingshot Consultancy  
STATUS DATE: 16-May-23

Botash Project - Utility Plant - TARGET SCHEDULE										Rev 04
Update 16 May 2023										Drafted by: Slingshot Consultants
ID	Task Name	% Complete	Duration	Start	Finish	Actual Start	Actual Finish	Baseline Start		
1	BOTSWANA - BOTASH REFURBISHMENT PROJECT 2023 - UTILITY PLANT	81%	690 hrs	Wed 3/15/23	Tue 5/23/23	Wed 3/15/23	NA	Wed 3/15/23		
2	PROJECT MILESTONES	43%	200 hrs	Wed 5/3/23	Tue 5/23/23	Wed 5/3/23	NA	Wed 5/3/23		
40	SOLAR PONDS COOLING WATER LINE	100%	108.75 hrs	Mon 5/8/23	Thu 5/18/23	Mon 5/8/23	Thu 5/18/23	Mon 5/8/23		
56	FLUE GAS DESULPHURISATION	98%	198.75 hrs	Wed 5/3/23	Mon 5/22/23	Wed 5/3/23	NA	Wed 5/3/23		
421	MEA SYSTEM ABSORPTION	92%	663.25 hrs	Wed 3/15/23	Sat 5/20/23	Wed 3/15/23	NA	Wed 3/15/23		
610	MEA SYSTEM STRIPPING	94%	183.5 hrs	Wed 5/3/23	Sun 5/21/23	Wed 5/3/23	NA	Wed 5/3/23		
765	MEA SYSTEM RECLAIMER	100%	106.25 hrs	Fri 5/5/23	Tue 5/16/23	Fri 5/5/23	Tue 5/16/23	Fri 5/5/23		
873	# 1 BOILER	84%	421.5 hrs	Mon 4/10/23	Mon 5/22/23	Mon 4/10/23	NA	Sun 4/30/23		
1785	# 2 BOILER	74%	216 hrs	Sun 4/30/23	Sun 5/21/23	Sun 4/30/23	NA	Sun 4/30/23		
2538	COAL HANDLING PLANT	27%	157.75 hrs	Fri 5/5/23	Sat 5/20/23	Fri 5/5/23	NA	Fri 5/5/23		
2583	BOILER PLANT COMMON	74%	197.75 hrs	Wed 5/3/23	Mon 5/22/23	Wed 5/3/23	NA	Wed 5/3/23		
2785	WATER TREATMENT PLANT (DEMIN PLANT)	79%	250.75 hrs	Thu 4/27/23	Mon 5/22/23	Thu 4/27/23	NA	Thu 4/27/23		
3140	INSTRUMENT AIR COMPRESSOR SYSTEM	77%	174.5 hrs	Mon 5/1/23	Fri 5/19/23	Mon 5/1/23	NA	Mon 5/1/23		
3173	STEAM AND CONDENSATE SYSTEM	56%	164.5 hrs	Thu 5/4/23	Sat 5/20/23	Thu 5/4/23	NA	Thu 5/4/23		
3413	TURBINE	82%	160.75 hrs	Fri 5/5/23	Sun 5/21/23	Fri 5/5/23	NA	Fri 5/5/23		
3671	MV RETICULATION	87%	129 hrs	Sat 5/6/23	Thu 5/18/23	Sat 5/6/23	NA	Mon 5/8/23		
4467	LV RETICULATION	61%	61.25 hrs	Thu 5/11/23	Thu 5/18/23	Thu 5/11/23	NA	Thu 5/11/23		



### BOTSWANA - BOTASH REFURBISHMENT PROJECT 2023 - UTILITY PLANT

Update:- 16 May 2023



UTILITY PLANT KEY MILESTONES	PLANNED	FORECAST	Variance	DAYS TO COMPLETION	TOP 5 RISKS	
# 1 Blr Pressure Test	19-May-23	A 15/03/23	-3	6	1) Structural steel works 2) Soft water Lines 3) Condensated Lines 4) Refractory 5) Demin plant - Concrete	
# 2 Blr Pressure Test	20-May-23	20-May-23	0			
# 1 Blr Fires In	23-May-23	23-May-23	0			
# 2 Blr Fires In	24-May-23	24-May-23	0			
Steam and Condensate on Pressure	23-May-23	23-May-23	0			
MEA Plant ready for operation	22-May-23	22-May-23	0			
Coal Plant ready for operation	22-May-23	22-May-23	0			
PLANT SUB-AREA:	Planned	Actual	Variance	Planned % Increment	Actual % Increment	Risk
UTILITY PLANT - OVERALL	91.54%	81.00%	-10.54%	6.05%	5.00%	
FLUE GAS DESULPHURISATION	95.37%	98.00%	2.63%	1.63%	4.00%	
MEA SYSTEM ABSORBTION	81.45%	92.00%	10.55%	11.97%	8.00%	
MEA SYSTEM STRIPPING	92.81%	94.00%	1.19%	9.01%	9.00%	
MEA SYSTEM RECLAIMER	100.00%	100.00%	0.00%	0.00%	0.00%	
# 1 BOILER	94.91%	84.00%	-10.91%	3.26%	4.00%	
# 2 BOILER	96.28%	74.00%	-22.28%	3.95%	3.00%	
COAL HANDLING PLANT	79.81%	27.00%	-52.81%	7.42%	3.00%	
BOILER PLANT COMMON	85.29%	74.00%	-11.29%	4.09%	0.00%	
WATER TREATMENT PLANT (DEMIN)	86.16%	79.00%	-7.16%	8.48%	2.00%	
INSTRUMENT AIR COMPRESSOR SYSTEM	93.92%	77.00%	-16.92%	5.12%	61.00%	
STEAM AND CONDENSATE SYSTEM	72.83%	56.00%	-16.83%	12.45%	7.00%	
TURBINE	97.58%	82.00%	-15.58%	3.23%	3.00%	
MV RETICULATION	80.65%	87.00%	6.35%	11.98%	0.00%	
LV RETICULATION	77.58%	61.00%	-16.58%	19.17%	0.00%	

LOOK AHEAD SCOPE OF WORKS	POSSIBLE RISKS	MITIGATIONS ON RISKS
Solar ponds - Cooling water	Late deliver of structural steel	
Boiler 1 furnace - Box up		Low risk
Boiler 2 P/T	Let down station - Gaskets	Low risk
Refractory	Drying - Units to be on load	Note
Coal Handling - Vibrators		
Lean Rich & Cool Heat exchanger		
Lean & rich Solution pumps		
Common Plant let down station V/Vs		
Condensate Water lines	Resources	Prioritise works - transfer
Demin Plant - Effluent sump	Corotion protection - damaged floor and walls - recast	Material available Resource allocations
Blr 1 & 2 ID Fans		
Babcock SOW - Blr 2		
Compressor housing - Civils works		
Scaffolding as per schedule	Scaffold removal	Daily management
Bunker 2 Skincasing works		
Water Treatment Plant - Effluent sump	Concrete repairs	Critical to fill sump
Blr 2 Baghouse repairs		
Blr 2 Bagfilter - Bags		
Pressure Valves	Late completion	Prioritise
Instrument Air - Mechanical	Tie in	Contractor on site 17 May