



SHE Alerts 0052

SECTION

SHE Management

Doc. No.

3800/FOR/0052

SUB-SECTION

Incident Investigations

Revision

01

SUBJECT

SHE Incident Alerts

Effective Date

11.12.2019

Page No.

1 of 1

Safety First !

Classification

Restricted Work Injury

Where?

Location: Salt plant-
Behind LLB yard

Section: Civils

When?

Date: 19/05/2023

Time: 15:45hrs

SHE ALERT

Incident Description

A UNIDEV employee sustained an injury on his right middle finger after his hand got trapped between two concrete slabs whilst trying to load them onto a TLB bucket.

Body part / Nature of Damage

- Injury on the right middle finger

Safety Communication

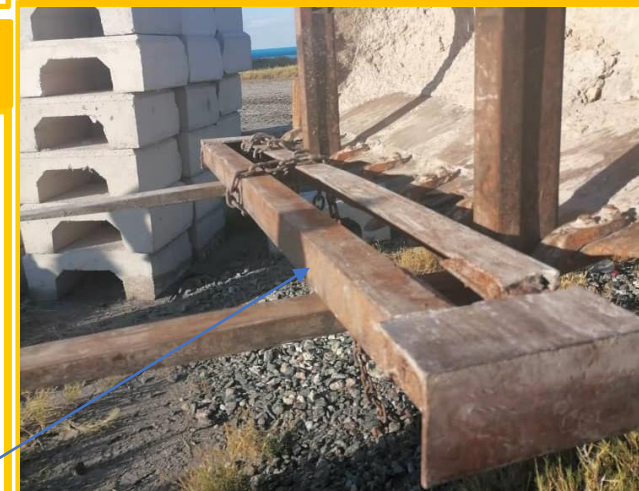
Preliminary Findings?

- **Non-Adherence To Procedure** – A second TLB without forks was expediated to fast-track the works which resulted in the employees manually loading the slabs onto the TLB bucket.
- The employee was wearing protective gloves.

The steel bar & chain method was initially introduced to avoid the manual loading of concrete slabs

Employee lifting the slab by placing his fingers in a nip point.

Pictures



Preventative & Corrective Measures

- First aid was administered on-site, and the injured was taken to the mine clinic and later transported to Francistown for further medical assessment.
- The incident was briefed to section employees.
- Employees must always adhere to safe work procedures and supervisors must ensure that their teams are complying with approved method statement.