

**Safety First !****SHE ALERT****SAFETY Communication****Pictures****Classification**

First Aid Injury

Where?**Section:**

Fabrication

Equipment:

N/A

Incident Description

A Welder sustained a laceration on his left foot after a carbon steel test plate fell from the workbench and hit him on the upper foot.

Preliminary Findings?

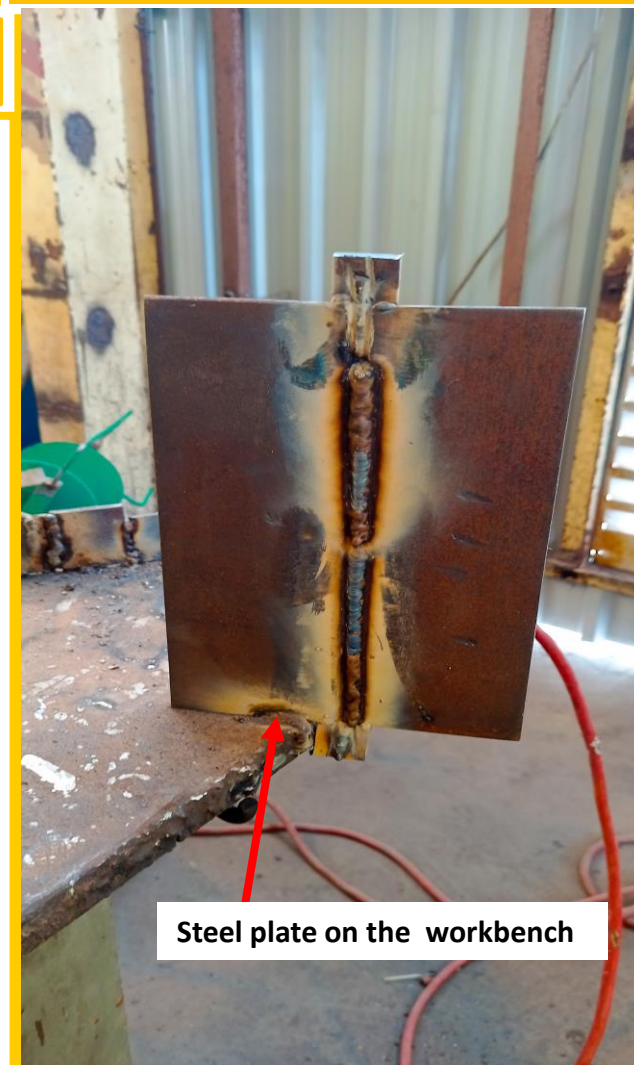
- Steel plate was not fully secured to the workbench.
- The injured tried to unstuck the welding electrode from the metal plate by shaking the electrode whilst in the holder.

When?**Body part****Date:** 31/01/2022**Time:** 1245hrs

Left foot

Corrective & Preventative Measures

1. Incident was reported to relevant authorities and shared with other employees.
2. First aid was applied and the injured was taken to the clinic.
3. Supervisors to ensure that employees always adhere to safe work procedures.



Steel plate on the workbench