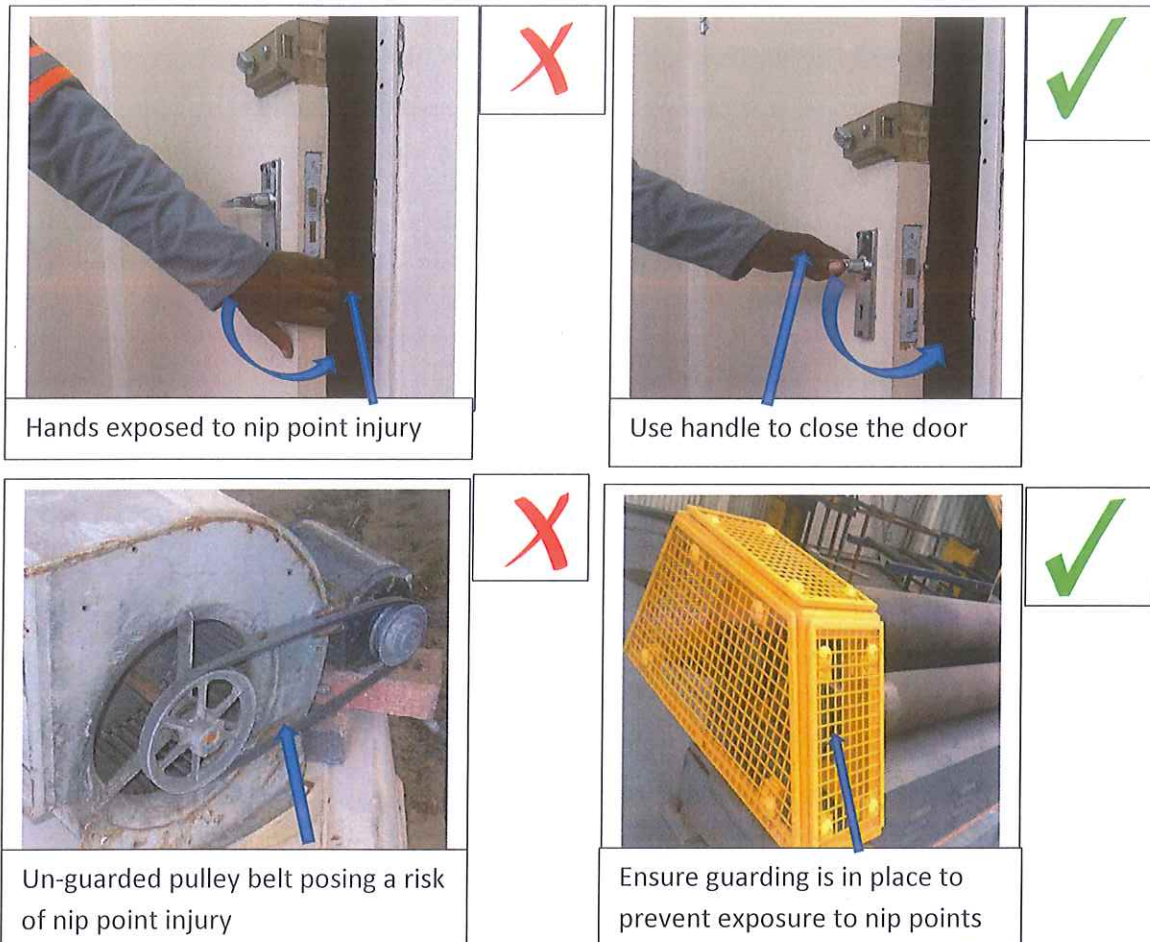


SAFETY TOPIC FOR THE MONTH OF FEBRUARY 2022

IDENTIFY AND PREVENT NIP AND PINCH POINT INJURIES



Important tips to avoiding nip/pinch points injuries:

- ❖ **Pre-work inspection:** Identify potential pinch points before starting work and ensure controls are in place.
- ❖ **Lockout/Tagout:** Always verify that equipment is de-energized before starting any maintenance work.
- ❖ **Machine Guarding:** Ensure that rotating machinery is guarded.

Marang W. Molatlhegi

SHE Manager

03/02/2022